



20850 State Highway 28
Delhi, NY 13753



Monthly Progress Report

**Sherburne Earlville Central School District
2022 Capital Project**

To: Robert Berson, Superintendent
Joanne Palamaro, Director of Finance and Personell
Ben Lewis, Coordinator of Transportation and Maintenance

Report Number #2

Week Ending: August 2, 2024

From: Evan Rivers, Schoolhouse Construction
Tim Scoones Schoolhouse Construction

Carbon Copy: Robert Kernan, The LA Group
David Funk, Ashley McGraw

SED Control #: 08-20-01-04-0-012-013

Summary

Another successful month of progress has been made. Clark has been accompanied by a couple of their subcontractors Turf Field Installers (TFI) and ACV Concrete. Atlantic Testing Laboratories (ATL) have also been onsite for most of the month. In June Clark discovered issues with the existing subgrade of the Track. The issues with compaction have been addressed and tested to meet quality assurance requirements. Listed below are bulleted details.

Athletic Field

- Cutting out soft subgrade areas, filling with item 4 material, and compacting.
- New scoreboard steel I-Beams painted black.
- Flat Pipe installed.
- Stainless steel receptacle boxes installed over conduit.
- Proof Rolling
- 12" of #57 subbase stone laid down and brought to grade over stabilization fabric and flat pipe.
- Subbase stone fine graded.
- 1A-1B mix of finish stone laid over subbase stone.
- Steeple Chase, Long Jump Pit, and Pole Vault Pit installed in North D-Zone.
- Field Goal posts foundation poured, and sleeves installed.

Summary Continued

Track Area

- Cutting out soft subgrade areas, filling with item 4 material, and compacting.
- Perimeter ACO trench drain installed and connected to storm water drainage underground.
- North and South D-Zone fence netting post sleeves installed in concrete pours.
- North and South D-Zone fence netting curb poured.
- ACO slot drain installed along front of grand-stand bleachers, with a concrete collar poured around it.
- Concrete sidewalk pours began near bleachers and continue to extend around perimeter of the track.
- ATL onsite for continuous compaction and concrete testing.

Outer Area

- Continued lifts and grading on eastern hillside.
- Excavation for stormwater drainage outside of track area.
- Stormwater drainage pipe and catch basins installed, backfill, and compacted.
- Concrete slab for storage building poured and storage building mobilized onto the new slab.
- Excavation and grading for pole vault area at the north end of the construction zone.
- The remainder of chain link fence that comes out was removed.
- ATL onsite for continuous compaction and concrete testing.

Project Challenges

- Field Infiltration
 - RESOLVED – The LA Group, Schoolhouse, Clark Companies, and Firefly testing came to a solution that would aid in field infiltration. Additional runs of Composite Collector Drain (Flat Pipe) were installed to meet the specification requirements for water infiltration rates.
- Existing Track Subgrade Conditions.
 - RESOLVED – Clark Companies marked areas in the track and field where subgrade conditions did not pass during proof roll test that ATL observed. These areas were cut out by Clark and existing material was removed. Stabilization fabric was installed, along with item 4 fill material in lifts and compacted. ATL was present on site through this process conducting compaction testing. All areas of the track and field have now passed density compaction testing.
- Weather
 - The month of July provided decent weather for Clark to continue with their site work. There have only been 2 days where weather conditions have forced work to be put on pause for an afternoon.

Field Progress Photos



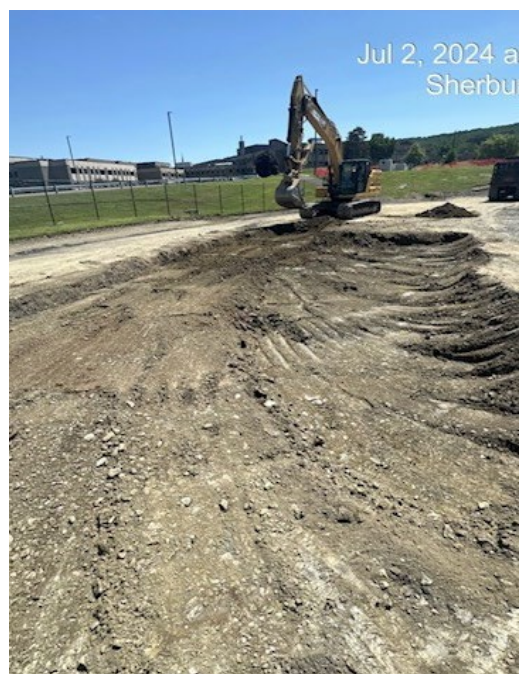
Track Subgrade Material Cut Out



Stablization Frabric in Track Subgrade Cuts

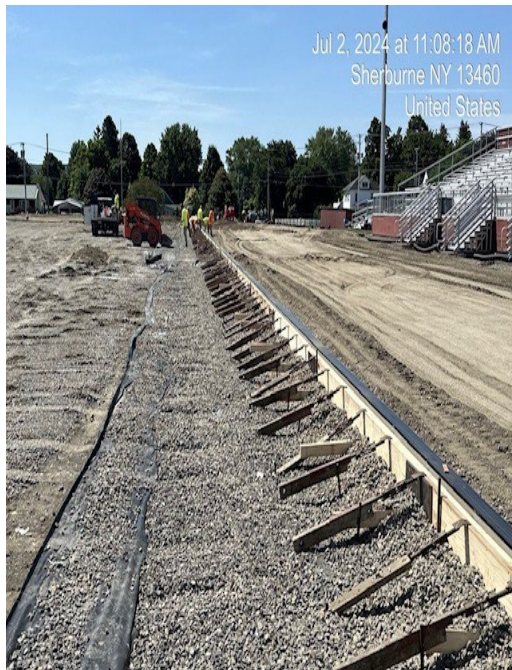


Track Subgrade Soft Areas filled with Item 4



Cont. Cut outs of subgrade

Field Progress Photos Continued



Track Slot Drain Install



Slot Drain Concrete Collar Pour



Finished Perimeter Slot Train

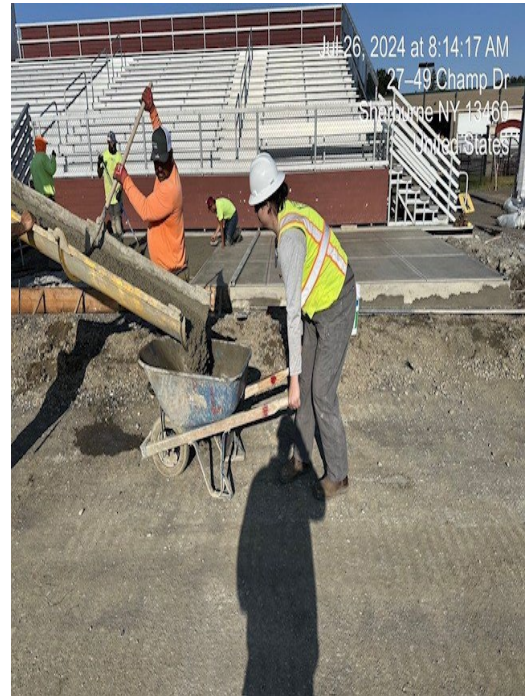


Field Fabric, Flat Drain, and Subbase Stone Install

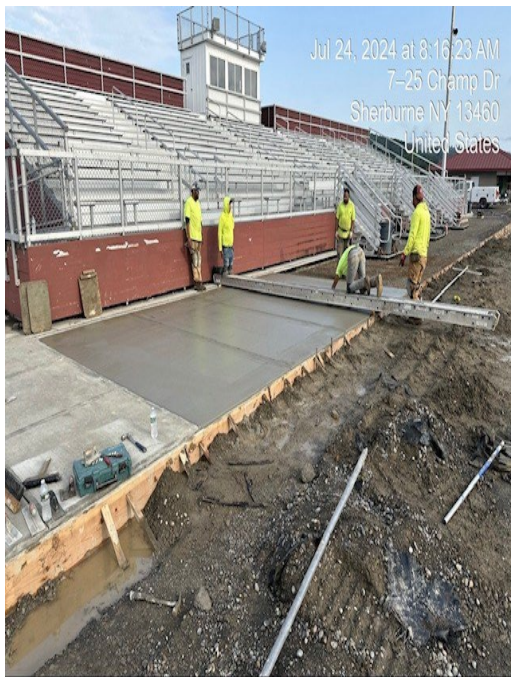
Field Progress Photos Continued



Extra Section of Flat Drain



ATL Onsite for Concrete Testing



New Concrete Sidewalk Pour



Current View of Construction