



Agriculture program has major growth spurt



It started five years ago with an innocent question from a pair of eighth-graders. Today, the Agriculture Science Program at Sherburne-Earlville is simply booming.

"Two students asked why we didn't have a program here, so we started an Agriculture Club after school and it blossomed into a single Agriculture Introduction course," said S-E Technology teacher Scott Bugbee, who helped Social Studies teacher Jay Tackabury create an Ag Club that ended a 25-year drought in the district.

The club drew enough student-interest to create a class, which soon led to a ribbon-cutting for a working greenhouse last spring, a full-fledged Agriculture Science Program headed by newcomer Nicole Chiappetta over the summer, and an official charter from the National Future Farmers of America Organization this fall.

"It doesn't surprise me," said Bugbee, who was instrumental in bringing the Chobani Greenhouse

for Sherburne-Earlville to fruition. "Agricultural education is fun for kids. They love the hands-on experience and they love being outside, so it doesn't surprise me that we've generated this much interest in the program."

Not surprisingly, those two inquisitive eighth-graders turned out to be the leaders of the pack this year as now-seniors **Daniel Misch** and **Edward Geier** serve as president and vice-president, respectively, of the district's Agriculture Education Club.

"The support has been absolutely phenomenal, from the students to the teachers to the community," said Misch, an Eagle Scout and first-generation beef farmer who hails from a long line of dairy farmers. "Agriculture, in general, isn't really a job; it's how you live your life."

continued on page 3 ➔

Superintendent's Message

Looking forward to another great year at SECS!



The school year is in full swing and our fall season is already beginning to segue into the colder weather of the upcoming winter months. Our winter sports seasons are already upon us and, before we know it, spring preparations for graduation will be just around the corner.

Construction crews are wrapping up their work on portions of the first phase of our building project. The roof systems on the Transportation buildings and the Elementary School gym/cafeteria sections have been replaced this fall. We are look-

ing forward to the start of work on the remaining portions of the Elementary School and the MS/HS roof in the spring. The summer will then bring the start of work on the replacement of our aging heating systems and the reconfiguration of the Elementary parent pick-up area. These projects are essential to ensure that our beautiful facilities are warm and dry, and our students are kept safe for generations to come. I want to thank our community for your continued support of the investment in the future of Sherburne-Earlville.

Another great reason to celebrate is the return of a full-fledged Agricultural Science program in the MS/HS. We are also very proud

of the reinstatement of our local chapter of the Future Farmers of America. It was certainly a very proud moment for S-E when we were awarded our charter by representatives of the national FFA chapter on October 3. It has been a long time coming for our school and the expansive agricultural community in our district.

We are very excited to have completed the roll-out of our 1:1 device initiative, too. All students at Sherburne-Earlville have access to a personal laptop, iPad or Chromebook to augment their learning experiences and prepare for the increasing digital approach in multiple facets of our society. Lessons, assignments and communications will be bolstered by incorporating the technology, where appropriate and meaningful to our students. We welcome any input from families as we grow in this process and further prepare students for the future.

Literacy is still in the forefront of our District's vision. I would like to thank the hundreds of students, parents, school officials and community members who participated and volunteered their time and resources to make our One School, One Book program and its October 23 celebration a great success. This year's book, *Appleblossom the Possum* by Holly Goldberg Sloan, was certainly enjoyed by our Elementary school community. Let's all read with our children and continue to share the joy of literacy and learning.

—Eric Schnabl, School Superintendent

schnable@seonline.org

Twitter: @EricSchnabl

Sherburne-Earlville Central School

The Maroon and White is published by the Sherburne-Earlville Central School Board and Administration, 15 School Street, Sherburne, New York 13460.

Administrators/Supervisors

Eric Schnabl, Superintendent
Todd Griffin, Assistant
Superintendent for Business
Nick Colosi, High School Principal
Jolene Emhof, Middle School Principal
Jamie Maistros,
Assistant High School Principal
Brad Perry, Assistant Middle School
Principal/Athletic Director
Antoinette Halliday,
Elementary Principal

Jeffrey Morris,
Assistant Elementary Principal
Ginger Rinaldo,
Special Education Director
Kimberly Corcoran,
Food Service Director
Jeff Genter, Head Custodian
William Loomis,
Transportation Supervisor

Board of Education

Thomas Morris, President; Susan Osborne, Vice-President; Rachel Amann-Burns;
Annette Bagnall-Graham; Peter Karaman; Debra Kurtz; Michael Ulrich

DISCLAIMER

Please take notice that the viewpoint of articles that appear in this newsletter are the personal expressions of individual authors and do not necessarily represent the official policies or positions of the Sherburne-Earlville Central School District or the Board of Education.



Chiappetta echoed Misch's words with regard to the Sherburne-Earlville community.

"Sherburne-Earlville wouldn't be Sherburne-Earlville without agriculture," said the Connecticut native, who studied Equine Science at nearby Morrisville State. "There are so many farms and so much community involvement. A majority of the students I have in my class either work on a farm or come from a working farm, so it's their nature to want to be involved in this kind of stuff."

Just how many students are involved this year? The official National FFA Organization paperwork granted to S-E on September 27 boasts 22 charter members, and more than 40 students accompanied Bugbee and Chiappetta to a photo shoot in front of the greenhouse in mid-October.

"We just had an FFA meeting and my whole room was full of students, and that was pretty cool," Chiappetta said. "I'm so happy that I'm here. I couldn't ask for a better place to be, and continuing this program, starting an FFA chapter and reviving what it used to be, it's pretty cool."

Sherburne-Earlville Central School District Superintendent Eric

Schnabl said the affiliation with the National FFA Organization and Chiappetta's appointment are keys to the program's future.

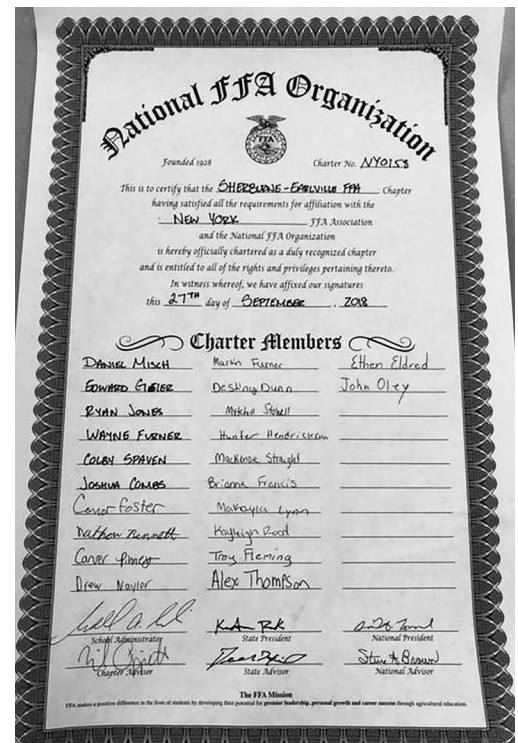
"Having the support at the local, state and now national level is going to provide our students with a lot of opportunities to open a lot of doors," he said. "(The FFA charter) provides a lot for us as far as credibility goes. We've always been a school with high standards and we've always been very interested in providing students with the best opportunities that we can."

"Being an Ag-heavy community and now having an FFA really lends to the fact that we're going to increase and potentially bolster that partnership between our school, our FFA chapter members and our local people in agriculture," Schnabl continued. "Our program began to grow and then it came to a point where we had enough interest from our student body to have a regular Ag program with an Ag sequence. That precipitated the need for us to hire an Ag Science teacher and we were able to secure a position with Nicole Chiappetta. We're really proud of that."

Bugbee said plans for a maple sugar house adjacent to the greenhouse are in the works and will

incorporate the logging skills of S-E students in the conservation program at BOCES. He added that Chiappetta is the perfect person to keep the program growing in the right direction.

"She'll keep students engaged through hands-on activities and keep looking for continuous improvements," Bugbee said. "Miss Chiappetta was the missing link to having the FFA, so we've invested in her and she's going to keep the interest going for years to come."



Sherburne–Earlville Communications

To help parents and community members know the best way to communicate with the school, we have created a chain of command guideline that should be a helpful resource. By contacting the following people in the order listed, your questions and concerns can be dealt with more efficiently.

For Questions About	1st Contact	2nd Contact	3rd Contact	4th Contact
Academics	Teacher	School Counselor	Building Principal	Superintendent
Athletics	Coach	Athletic Director	Superintendent	
Behavior	Teacher	Asst. Principal	Building Principal	Superintendent
BOE Policies	District Clerk	Superintendent	Board of Education	
Budget	Asst. Supt.	Superintendent		
Building Use	Head Custodian	Building Principal	Asst. Supt.	Superintendent
Cafeteria	Cafeteria Mgr.	Asst. Superintendent	Superintendent	
Classroom Procedures	Teacher	Building Principal	Superintendent	
Co-Curricular	Advisor	Building Principal	Superintendent	
Facilities	Head Custodian	Asst. Superintendent	Superintendent	
Health Office	Building Nurse	Building Principal	Superintendent	
Scheduling	Teacher	School Counselor	Building Principal	Superintendent
Special Education	Teacher	Building Principal	CSE Chairperson	Superintendent
Transportation	Bus Driver	Trans. Supervisor	Building Principal	Superintendent

IMPORTANT CONTACT NUMBERS

Superintendent.....674-7330

Assistant Superintendent.....674-7365

District Clerk.....674-7330

Head Custodian.....674-7329

Transportation Supervisor674-7353

Food Service Director674-7323

Athletic Office674-7375

High School Office674-7380

High School Principal674-7380

High School Assistant Principal674-7380

Middle School Office674-7350

Middle School Principal.....674-7350

Middle School Assistant Principal.....674-7350

MS/HS Nurse 674-7314

MS/HS Attendance 674-7325

Elementary Office674-7336

Elementary Principal.....674-7336

Elementary Assistant Principal.....674-7336

Elementary Nurse.....674-7389

Special Education Office.....674-7347

Special Education Director674-7347

Board of Education Meetings

All Board of Education meetings are held in the Elementary Library Classroom at 6:30 p.m. unless otherwise noted.

Remaining Meetings

- November 5
- November 26
- December 10
- January 7
- January 28
- February 11
- March 4
- March 18
- April 1
- April 24 (Wednesday): Special VOTE Meeting-vote on BOCES admin, budget, Board Members and Board Meeting
- May 13: Board Meeting and Budget Hearing
- May 21 (Tuesday): Vote on Budget (no board meeting)
- June 3
- June 17

WELCOME BACK!



Elementary, Middle and High School students officially returned to the Sherburne-Earlville Central School District on September 6, one day after the annual Back to School Bash gave our kids and their families a chance to meet teachers, visit classrooms, tour the facilities, sign up for extra-curricular activities, and snack on cotton candy, popcorn and snow cones.

Take a look at some of the bright eyes and wide smiles at the elementary, middle and high schools on opening day of the 2018-19 academic year.

Want to see more? Visit our Facebook page at www.facebook.com/SherburneEarlvilleCSD/.



SECSO accepting Athletic Hall of Fame nominations

Sherburne-Earlville Central School District is seeking nominations for its inaugural Athletic Hall of Fame class, which will be inducted June 19, 2019, in the MS/HS Auditorium.

Nominations will be accepted through March 1, 2019. Athletes, coaches, administrators and contributors who brought pride and distinction to the Sherburne-Earlville Athletics Program through commitment, sacrifice and dedication may be nominated.

Nomination forms and by-laws are available online at <http://www.secsd.org/AthleticHallofFame.aspx>.

Each member of the Class of 2019 will receive a plaque during the Induction Ceremony, which will take place during our End of Year Athletic Awards Night. The 2019 awards night is scheduled to begin at 6:30 p.m. Wednesday, June 19.



Athletic Hall of Fame inductions will take place on odd years beginning in 2019, alternating with Academic Hall of Fame inductions (even years). All Athletic Hall of Fame nominees will be considered for the first class. Nominees who are not inducted this June will

remain eligible for future Athletic Hall of Fame classes.

For more information, visit our website at www.secsd.org, email Athletic Director Brad Perry at perryb@seonline.org, or call our Athletics Office at 607-674-8433.

College and Career Exploration

It's never too early to plan ahead!

Sherburne-Earlville eighth-graders had the opportunity to start thinking about their futures as DCMO BOCES hosted the 2018 Fall Career and College Exploration Event in Oneonta on October 9.

The annual event started at the Foothills Performing Arts Center and ended at SUNY Oneonta for afternoon tours of campus facilities. Our future prospects took a break to capture this moment in the middle of O-State's grounds on a picture-perfect fall day.

Attendance hit full capacity, with 400 students from 17 area schools.



Sherburne-Earlville Central School

Athletic Hall of Fame

Today's Date: _____

Application Due Date: March 1, 2019

Nominee can be an individual athlete, a coach, trainer, administrator or a team

Nominee's Name: _____
(Last) (First) (Middle)

Graduating Class: _____

Address: _____

Phone Number: _____ Email address: _____

Nominating Person: _____
(Last) (First) (Middle)

Phone Number: _____ Email address: _____

Role of person making the nomination: (Circle one)

Staff **Coach** **Parent** **Community Member** **Other:** _____

Nominations for Hall of Fame Candidates are accepted from September through March. Candidates must be out of high school for at least five years before becoming eligible for consideration. All candidates for induction must be formally nominated.

Please elaborate why you feel this nominee should be inducted. Feel free to write about accomplishments, contributions, or any other facet of their athletic career at Sherburne, Earlville, or Sherburne-Earlville on the back of this form. Should you need more space, feel free to provide additional pages. Next, please supply proof of accomplishments for example newspaper article or scorebook, etc. In addition, please submit a photograph of nominee with this form. Once the completed nomination form is received by the Athletic Director, all actions necessary to the selection process shall remain confidential. All information submitted shall be retained by the Athletic Director.

continued on next page →

Adopt-A-Classroom

Colgate keeps connecting with our kids

Sherburne-Earlville Elementary School welcomed Division I athletes from Colgate University on September 25 to kick off the eighth year of the Adopt-A-Classroom mentorship program.

More than 500 athletes representing all of Colgate's sports programs participated on opening day, as well as the mascot himself, Raider!

Colgate's elite will visit SEES throughout the 2018-19 academic year to help educate and inspire our kids during class time, lunch, recess and beyond. Program director and SEES Principal Antoinette Halliday thanks Colgate for continuing this joint effort to educate youth and serve the community.

Adopt-A-Classroom started with Halliday's predecessor, John Douchinsky, who retired in 2014.



Yearbooks: What you need to know

Our yearbook staff is hard at work creating the 2019 edition of the Archivon!

We are taking yearbook orders until February 1, 2019. Cost for high school yearbooks is \$50 until December 21 (December 31 if ordering by mail) and will increase to \$55 starting January 1. Cost for middle school yearbooks is \$25 (increases to \$30 starting January 1).

All students who place an order are guaranteed to receive a yearbook. Extras will be available in June and will first be offered to seniors who did not pre-order.

Seniors may order a name stamp (\$7) or a name plate (\$5) for their yearbooks by February 1. Seniors also may order a supplement (\$5), which will include activities and events that occur between March and June.

Students may retake yearbook photos November 1 until 2:45 p.m. Students should report to the auditorium for retakes during lunch or a free mod. A photo order is not required for retakes.

Senior pictures and baby pictures must be submitted by November 30 to be included in the senior section. Pictures in the senior section are head-and-shoulder shots (no hands or props). Photos that cannot be cropped to head-and-shoulder shots will not be included in the senior section.

Club and Activity pictures are scheduled for January 24 and 25. Senior ads are due no later than January 31.

To order yearbooks by mail, please complete the form in this newsletter and mail it with a check or money order. Holiday gift-certificate forms were part of the first report-card mailing but are also available online at www.secsd.org (click on **High School** or **Middle School**, then click on **Yearbook**).

Credit cards may be used to pay for high school yearbooks online at <https://ybpay.lifetouch.com>. Our yearbook ID code is **10700719**. This option is not available for middle school yearbooks.

Business owners who wish to support the *S-E Archivon* by purchasing an ad should call the yearbook line at **607-674-8424** or email yearbook@seonline.org.

Technology

Leave them to their own devices

Students in Michael Rodriguez's Social Studies class received Dell laptops October 22 at Sherburne-Earlville High School as part of the Sherburne-Earlville Central School District's technology plan for the 2018-19 academic year.

Seniors, juniors and sophomores logged onto personalized laptops for the first time the previous week. The freshman class completed the 1-to-1 initiative to give all SECS D students their own devices for school-related work. In addition to the laptops for our high-schoolers, Chromebooks went to students in grades 3-8 and iPads were distributed to grades K-2.



YEARBOOK



Middle School Yearbook Gift Certificate Order Form

Yearbooks are \$25 until Dec. 31. January 1 the price increases to \$30. NO orders will be accepted after January 31. We must receive your request by December 20 in order for us to send the gift certificate before the holidays.

Please complete this form and mail along with a check or money order payable to SE Yearbook.

Name of MS Student _____

Your name, address and phone number:

Mail slip and payment to:

S-E Yearbook • 13 School St. • Sherburne, NY 13460

☐ Check this box if you are using this as an order form and do not need a gift certificate.

Questions? Call the yearbook line at 674.8424 or email yearbook@seonline.org



High School Yearbook Gift Certificate Order Form

Yearbooks are \$50 until Dec. 31. January 1 the price increases to \$55. NO orders will be accepted after January 31. We must receive your request by December 20 in order for us to send the gift certificate before the holidays.

Please complete this form and mail along with a check or money order payable to **SE Yearbook**.

Name of HS Student _____

Your name, address and phone number:

Mail slip and payment to:

S-E Yearbook • 13 School St. • Sherburne, NY 13460

☐ Check this box if you are using this as an order form and do not need a gift certificate.

Questions? Call the yearbook line at 674.8424 or email yearbook@seonline.org

Welcome to Sherburne



NICOLE CHIAPPETTA



Nicole Chiappetta is S-E HS's new Agriculture teacher.

Originally from Trumbull, CT, Chiappetta participated in a large agriculture program at Trumbull HS and worked with horses and many other types of livestock.

She went on to major in Equine Science and Management at Morrisville State College in New York, worked at the draft horse barn and traveled across the East Coast during summer months to show off horses at various state and county fairs.

Chiappetta, a former Division III softball catcher/outfielder, also worked as an admissions ambassador at

Morrisville, giving tours to prospective students.

TODD FOWLSTON



Todd Fowlston joins the S-E Elementary School team this year, teaching computer lab classes to students in grades K-2. The lifelong

Sherburne resident graduated from S-E HS in 2003 and went on to Morrisville State College and Mohawk Valley Community College.

After earning a degree in graphic design, Fowlston worked several years as a graphic designer. He and his wife, Janelle, have two children—Miles (age 6) and Ellie (3).

Fowlston also serves as co-director

and coach of the S-E Thunder youth wrestling team.

DANIEL HAMMOND



Dan Hammond is teaching Chemistry and Earth Science at S-E High this year.

Hammond started teaching in 1991 at Dover Plains, a merged district on the New York/Connecticut border in Dutchess County. He went on to teach at Port Chester, a large school with 1,200 students and an inner-city feel on the north shore of the Long Island Sound.

Hammond and his wife, Annette, returned to the district in which he grew up—Gilbertsville-Mount Upton—in 2001, after they bought a

ve-Earlville!

S-E Central School District welcomes the following people to its staff for the 2018-19 academic year.

farm that has been in his family since the 1850s. Hammond taught at GMU until 2015, when he left the profession to focus on the farm.

DANIELLE HOBART



Danielle Hobart hails from the Canandaigua area in the Finger Lakes region and is joining the S-E family as a Special Education Teacher in the MS.

Hobart previously taught in the Finger Lakes region and in the North Country on the St. Lawrence River. In her spare time, she enjoys kayaking and learning new things.

EMMA KARAMAN



Emma Karaman is a 2013 S-E graduate who returns to the district as an Elementary School Fourth-Grade Math teacher.

Karaman finished her undergraduate degree in Early Childhood/Childhood Education at SUNY Oneonta in December 2016 and is currently working on her master's in Special Education.

Karaman, who taught kindergarten in Oxford last year, is a referee for USSF and NFHS soccer games. She also works at Gilligan's during the summer.

ERIN LAW



Erin Law is S-E Elementary School's new Social Worker.

Law grew up just down the road in Oxford and, after graduating, attended Nazareth College

in Rochester. After three years of working, Law returned to college and earned a master's in Social Work and a master's in Public Administration at Binghamton University.

In her free time, Law enjoys reading and going to the lake with her Yellow Labrador, Timber.

JESSICA LEWIS



Jessica Lewis joins S-E Elementary School as a fourth-grade ELA teacher.

Lewis lives in Earlville with her husband, Ben, and their four children,

Benny, Braden, Brett and Allan.

Lewis comes to us from Otselic Valley, where she taught second grade. She enjoys reading and writing in her free time.

WESLEY MACKER



Wesley Macker joins S-E this year as a HS Physics teacher. Macker is from Suffolk County on Long Island and has been teaching Physics for three

years—most recently at Farmingdale HS. He also taught Physics at Bay Shore and Comsewogue High Schools.

Macker, who has coached track and field off-and-on for eight years, also has been involved with FRC and VEX Robotics for the last three years. While Macker is new to the area and used to a more urban setting, he is looking forward to becoming part of our community.



SARAH SCHUR



S-E welcomes Sarah Schur as its MS/HS Psychologist.

Schur grew up in the suburbs of New York City, attended the University of

New York, and went on to earn her master's in Bilingual School Psychology from Fordham University.

Schur, who spent this past summer traveling to Greece and Israel, says she's looking forward to a great year with the students of S-E.

KELLY SHATTUCK



Kelly Shattuck graduated from S-E in 2006 and returns this year as a Special Education teacher in the Elementary School.

Shattuck graduated from West Virginia Wesleyan College in 2010 with a B.A. in Elementary and Early Education. In 2011, she graduated with a M.Ed in Multi-Categorical Special Education.

For the past seven years, Shattuck has been teaching near Louisville, KY.

WILLIAM SLENTZ



William Slentz returns to the community as a member of the district's Special Education and Related Services after graduating from S-E HS in 2011.

Slentz attended Hartwick College until 2015, majoring in History, and went on to earn his Masters in Arts of

continued on next page →



Welcome to Sherburne-Earlville! (continued)

Teaching Social Studies at Binghamton University in 2017. He is continuing his education at Binghamton University as Slentz is pursuing dual-certification in Special Education.

Slentz also is involved with the athletics program as a coach and enjoys virtually everything related to the outdoors.

JENNA STANGO

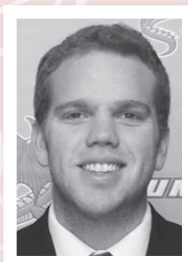


Jenna Stango is the newest addition to the music department at S-E, where she will be the Elementary School Band Director.

A native of Scranton, PA (home of "The Office"), Stango has been a Central New York resident for six years. She earned a Bachelor of Music in Music Education with Flute Performance Honors, and a Master of Music in Music Education at Syracuse University. Stango also studied flute at the Conservatoire de Strasbourg in Strasbourg, France.

During her time at Syracuse, Stango enjoyed participating in the "Pride of the Orange" marching band, which granted her several opportunities to perform at NFL and CFL football games—including Super Bowl XLVIII.

KEVIN VIBBARD, JR.



three sports.

He earned a degree in Adolescence Education and Mathematics at SUNY Oneonta, where Vibbard spent all four of his years as Student Assistant Basketball Coach. Vibbard will bring that experience to the Marauders basketball program as he will be the junior varsity boys coach this winter.

YANFANG (DAISY) WANG



Wang worked for four years as a university peer counselor while completing an internship at a local mental health hospital and prison. She then moved to Changji in China and worked at Xinjiang Agriculture

Kevin Vibbard, Jr. returns to S-E as a HS Algebra teacher. Vibbard graduated from S-E High in 2014, serving as co-President of his class and participating in

Vocational College as a college counselor and career planning teacher for about a year. Wang went on to earn her master's degree in school counseling from SUNY Oswego and completed her internship at Oswego HS.

Wang's education at SUNY Oswego was based on the American School Counselor Association's model. She focused on narrative therapy, CBT and play therapy.

CHARLEE WEIDMAN



Unadilla Valley graduate Charlee Weidman joins S-E High as a Living Environment teacher.

Weidman earned a bachelor's degree in Biology at Wells College, where she played soccer, basketball and softball. She also attended Stony Brook University, where she earned a master's in Ecology, and went on to SUNY New Paltz for a Master of Arts in Adolescent Education.

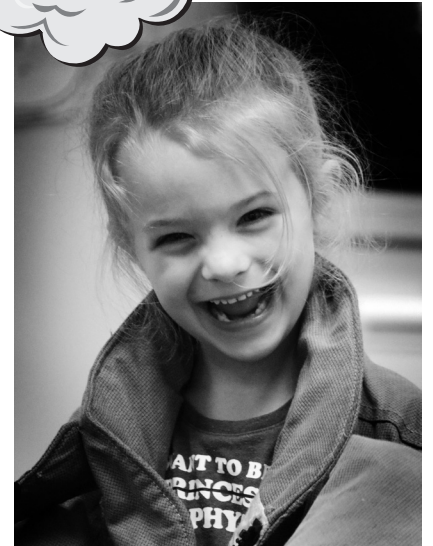
Weidman also taught two semesters of science courses at Dutchess Community College while attending New Paltz.

So happy you
could join us!



Fire Prevention Week

Elementary Students Fight Fire



Our Sherburne-Earlville Central School District students got an extra-special treat October 11 as firefighters from the Sherburne, Earlville, and North Norwich Fire Departments visited the Elementary School for Fire Prevention Week!

We thank our local fire departments and the Chenango County Sheriff's Office for taking the time to teach our youngsters about smoke detectors, 911 calls, fire extinguishers, and safety procedures. Their interactive lessons featured real firefighter gear; a stop, drop and roll exercise; and an "escape" from the Oxford Fire Department's Safety House trailer.



Claudia's Closet accepting donations

Claudia's Closet distributed winter wear, sneakers and other gently-used clothing to more than 80 students this year thanks to your generous donations!

Sherburne-Earlville set up Claudia's Closet as a fund in memory of elementary school nurse Claudia Bigelow, who helped organize holiday baskets and provided students with weather-appropriate clothing throughout the school year.

Claudia's Closet continues to accept donations of new or gently-used items and is specifically seeking the following:

- Waterproof gloves/mittens for school-age students and adults;
- Boots in all sizes EXCEPT size 3 boys (high need for men's and women's sizes 6-and-up);
- Snow pants in all sizes for school-age students and adults;

- Winter coats for adults; and sneakers in all sizes for school-age students and adults.

Claudia's Closet also accepts checks and other monetary donations. Checks should be made payable to *Sherburne-Earlville Central School*, include *Claudia's Closet* in the memo line, and mailed to *Arlene Wade, c/o Sherburne-Earlville Central School District, 15 School Street, Sherburne, NY 13460*.

The Claudia's Closet Committee gives special thanks to The Knights of Columbus, The Lions Club, The Sherburne Press, Empire Wireless, The United Council of Churches, Dollar General, Mobile Life Transport, Sherburne PTO, and Scott Bugbee's Technology Class for their contributions.

Raffle drawing set for December 20

Tickets for the third annual Community Raffle to Support Claudia's Closet will be on sale soon at Sherburne-Earlville Elementary School's front office, Empire Wireless and the Sherburne News. Empire Wireless is accepting donated items for this year's raffle. The drawing will take place at 4:00 p.m. December 20.



Child Find: What you need to know

The Sherburne-Earlville Central School District recognizes its responsibility to provide a free and appropriate public education to eligible students with disabilities within its geographical boundaries.

The District has a "child find" process that is designed to locate, identify and evaluate children with disabilities residing within its geographical boundaries preschool through grade 12 or through age 21 if they have not received a high school diploma.

If you know a child who lives within the boundaries of the Sherburne-Earlville Central School District and attends school in

the District who may be in the need of special education and/or related services, please contact the District's Director of Special Education for further information regarding the referral and evaluation process.

If the student is a school-age student who attends a non-public private school that is not located within the geographical boundaries of the District, the student may need to be referred to the school district in which the non-public school is located in order to receive services during the regular school year. Please contact that school district for information regarding time

deadlines for requests for services.

The District's Child Find process extends to students with physical or mental impairments that substantially limit a major life activity. Such students may be eligible for services or accommodations pursuant to Section 504 of the Rehabilitation Act. Section 504 is a Federal civil rights statute that prohibits discrimination against persons with disabilities and programs receiving Federal financial assistance.

Please contact your child's building principal for more information regarding Section 504 eligibility and services.

From the Nurse's Office

Immunization information for parents

Parents, please take the time to read the following immunization information from the Health Office!

Immunization requirements for entrance to UPK for 2018-19 school year:

- All students must have 4 doses of the Dtap, HIB and pneumococcal vaccines, 3 doses of the Polio and Hepatitis B vaccines, and 1 dose of the MMR and Varicella vaccines.

In addition, the following are required for entrance to kindergarten:

- All students must now have 5 doses of Dtap, total (unless the 4th dose was given after age 4).
- All students must now have 4 doses of the Polio vaccine, total (unless the 3rd dose was given after age 4).
- All students must have 2 doses each, of the MMR and Varicella vaccines.

Immunization requirements for 2018-19 sixth-graders:

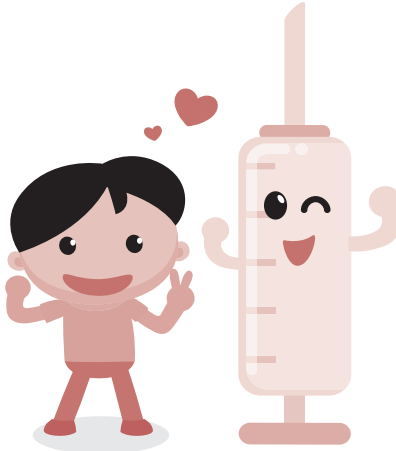
- New York State Public Health Law was amended requiring all students entering grade 6 for the 2018-2019 school year to have a booster vaccination for diphtheria, tetanus toxoids and acellular pertussis, (This may appear on your child's immunization record as "Tdap, Boostrix or Adacel").
- In addition, 6th graders must also be fully immunized against Varicella (commonly known as chicken pox), with 2 doses of the vaccine.

New immunization requirements for seventh- and 12th-graders:

All students entering grades 7 and 12 for the 2018-2019 school year are required to receive an adequate dose or doses of the vaccine against meningococcal disease by September 7, 2018.

- One dose of meningococcal vaccine is required before 7th grade. If your child had the first dose as a sixth-grader, then another dose is not required until 12th grade.
- A total of two doses will be required before 12th grade. Most students entering 12th grade got their first dose when they were younger and are now due for their second dose, or booster. This booster is needed because protection from the vaccine decreases over time.
- The only teens who will not need a second dose before 12th grade are those who got their first dose on or after their 16th birthday.

Please contact your health care provider or Health Office at school for more information.



Use of student images explained

The Sherburne-Earlville School District features photographs, videos and/or the work of our students in district and community publications on a regular basis. Names sometimes accompany these images, especially for those students who earn special recognition (awards, certificates, honors, etc.) from the district and/or outside entities.

These images may appear in printed district publications (such as brochures, calendars, newsletters, pamphlets, year-books, etc.); on the district's website (www.secsd.org); on the district's social media pages (Facebook and Twitter); et al.

If you object to your child's image, name or work appearing in these formats, you must submit that objection in writing to the district Superintendent.



Sherburne-Earlville School-Based Health Center

Elementary SBHC : 607-674-8417

High School SBHC: 607-674-8416

Toll-free: 1-844-ALL-SBHC (255-7242)

What is the School-Based Health Center (SBHC)?

The Sherburne-Earlville School-Based Health center is a collaboration between the school district and Bassett Healthcare Network to provide easy access for comprehensive, convenient health care to students in grades pre-K through 12 at the school. For children who already have a primary care provider (PCP), the SBHC staff will work with that provider to care for that child. For children without a PCP, the SBHC staff may become the child's primary source of care.

What services does the SBHC provide?

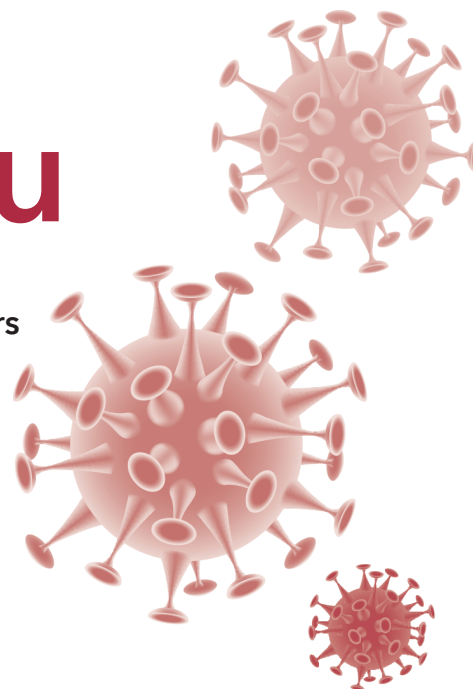
- Well child care: annual visits (sports or camp physicals), as recommended by the American Academy of Pediatrics
- Immunizations, as recommended by the Centers for Disease Control
- Acute care: fevers, sore throats, twisted ankles, bellyaches
- Oral health care: dental exams, cleanings, sealants, fluoride treatments
- Mental health care: depression, anxiety, suicide prevention
- Chronic disease care: asthma, obesity, ADHD
- Health Education: both during visits and through school-wide initiatives



Bassett Healthcare Network
School-Based Health

Take 3 Steps to Fight the Flu

As you are aware, this flu season is especially severe, with widespread flu and record numbers of New Yorkers hospitalized. It's important that we all take steps to slow down and stop the spread of this virus.



1

Get the vaccine!

If you haven't gotten your flu shot, get one now. It's not too late. The vaccine helps prevent the flu and reduces the severity of illness if you do get sick.

Everyone 6 months of age and older should get a flu shot.

The shot is especially important for those at high risk of serious flu complications, and even death – children; pregnant women; people with chronic health conditions, like asthma, diabetes or heart and lung disease; and people 65 and older.

They're counting on you!

When you get a flu shot, you also help protect others, especially people at high risk of serious flu illness, and children younger than 6 months who are too young to be vaccinated.

2

Stop the flu from spreading!

- Wash hands often with soap and water for at least 20 seconds...the time it takes to sing "Happy Birthday" twice.
- If soap and water are not available, use an alcohol-based hand rub.
- Cough or sneeze into a tissue, not your hands. Toss used tissues.
- Avoid touching your eyes, nose and mouth. Germs spread this way.
- If you're sick, stay home for at least 24 hours after your fever is gone without the use of fever-reducing medicine.

3

Antivirals

If you get the flu, prescription antiviral drugs can shorten your illness and make it milder. They can also prevent serious flu complications, like pneumonia. Those at high risk should contact their health care provider at the first sign of the flu.

It's very important that antiviral drugs be used early to treat people who are very sick with the flu (like people in the hospital) – and those who have the flu and are at high risk for serious flu complications.

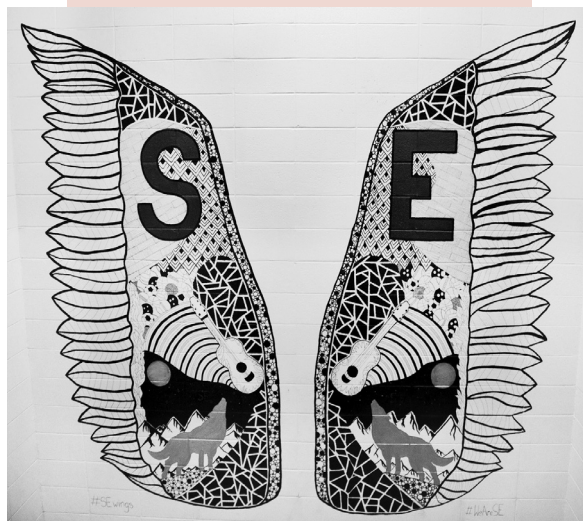
Flu symptoms include:

- | | | |
|---------------|------------------------|------------|
| • Fever | • Runny or stuffy nose | • Headache |
| • Cough | • Body aches | • Chills |
| • Sore throat | | • Fatigue |

For more information:
health.ny.gov/flu

Lights, camera, action!

Check out some of the action and poses from our 2018 fall sports teams' season openers, Senior Nights and more! For sports schedules and rosters, visit the website <https://sherburne-earlville.schoolteams.com/>. For more information on SECSD sports, visit our athletics page online at <http://www.secsd.org/Athletics.aspx>.



S-E spreads its wings

Our wings were completed before school started in September, but we still needed just the right quote. Three finalists were put to the vote on the Sherburne-Earlville High School Twitter page (twitter.com/S_E_HS) and the winner is No. 2:

*"Until you spread your wings,
you'll have no idea
how far you can fly."*

The other finalists were, *"Your wings already exist. All you have to do is fly,"* and, *"You were born with potential. You were born with goodness and trust. You were born with ideals and dreams. You were born with greatness. You were born with wings. You are not meant for crawling. You have wings. Learn to use them and fly."*

The winning quote will be added to the painting soon, likely over Thanksgiving Break. Thanks to everyone who voted and remember to keep aiming high!

A special day at SECSD

October 23 marked an extra-special Tuesday in the Sherburne-Earlville Central School District!

Special Guest



S-E Middle School spent time with Gabriel Bol Deng during lunch then attended his presentation in the auditorium on “HOPE for Ariang.” This charitable foundation is dedicated to providing South Sudanese with inclusive access to education, opportunities and resources, with a special focus on girls.

In seventh grade, students read “A Long Walk to Water” by Linda Sue Park. Based on a true story, one of the main characters (Salva) must flee from his village in Sudan due to civil war. He faces grueling obstacles on his way to safety. Known as the “lost boys of Sudan,” Salva and thousands of other Sudanese, eventually find refuge in the United States. Salva becomes educated and returns to Sudan to help rebuild his war-torn country.

Gabriel Bol Deng is one of the “lost boys of Sudan” with a similar story of hope and resilience. He spends time between Syracuse and South Sudan discussing his “HOPE for Ariang” mission.

Special Mix



S-E Elementary School celebrated Mix-It-Up Day, which included a fun lunchtime mixer. Students received color-coded paper strips in class and found their lunchmates for the day by matching them to helium-filled balloons tied to tables.

By sitting next to someone new, students cross the lines of division in a safe environment, meet new people, and help build an inclusive and welcoming school community. Teaching Tolerance, a project of the Southern Poverty Law Center, launched the Mix-It-Up program in 2002.

Special Book



The night belonged to “Appleblossom the Possum” as S-E Elementary held its Appleblossom Celebration. Written by award-winning author Holly Goldberg Sloan, “Appleblossom the Possum” is an animal adventure from start to finish for elementary students of all ages.

S-E Elementary selected “Appleblossom the Possum” this year for its “One School, One Book” program, which supports reading at school and at home on a daily basis.



Drum roll, please

Our guest percussion artist, Randy Waterman, has been working with Sherburne-Earlville middle and high school students on percussion fundamentals this year. Waterman is helping to lay the foundation for our spring marching percussion program!

Adult & Continuing Ed Buddy Bench

Afton Central School offers a free adult and continuing education program for those interested in earning a high school equivalency diploma or simply to improve reading, writing and math skills. Classes are self-paced and may be joined at any time. All sites are handicap-accessible and prohibit smoking. Sites are Afton Central School, the CDO Workforce Centers in Norwich and Oneonta, the Sidney Civic Center and Walton Elementary. For more information, call **607-639-2811** to verify time and location. For information about a home study program for those who cannot attend classes, call June White at **1-800-792-2145** or **607-639-2811**.

Book Giveaway

The Sherburne-Earlville Teachers' Association will sponsor its Annual Holiday Book Giveaway from 1:00-3:00 p.m. Saturday, December 1, at the Sherburne Firehouse. Children may select books for family members and enjoy Christmas cookies. Gift-wrapping for their selections will be available. Please consider donating a new or gently used book that your family has outgrown. Donations may be dropped off any time during school hours at the elementary school's main office.

Bottles and cans for the band

Sherburne-Earlville's band has set up a fundraising account at Village Bottle and Can Return on Canal Street in Sherburne. Refunds may be donated to the "S-E Marching Marauders" account upon request. Just ask and the return-taker on duty will give the band your refund as fundraising credit.

Bring us your Box Tops

Sherburne-Earlville Elementary School and Middle School will again be collecting Box Tops for Education during the 2018-19 academic year. This program helps provide rewards and positive reinforcements for students who exhibit stellar behavior. Simply cut out Box Tops and bring them to the main office.

Sherburne-Earlville Elementary School's Buddy Bench is here! Need a playmate? Want to join a game? Just looking to hang out with someone? Take a seat on the SEES Buddy Bench and see what happens next! The Buddy Bench is part of Sherburne-Earlville Central School District's Character Education. To learn more, visit our Character Education webpage at <http://www.secsd.org/content.aspx?id=46854>.

Chorus performs at 9/11 service

Sherburne-Earlville chorus students performed during a 9/11 Memorial Service at Thomas Gaines Memorial Park behind the Sherburne Public Library on September 11. To see a photo from the performance, visit our Facebook page at www.facebook.com/SherburneEarlvilleCSD/.

Vendor Fair & Craft Show

The Mad Hatters will sponsor a Vendor Fair and Craft Show from 9:00 a.m.-2:00 p.m. November 17 in the refurbished building at 19 North Main St. in Sherburne. The event will feature local vendors, handmade crafts and concessions. Proceeds will help cancer patients locally through Chenango Health Network. For more information about the Chenango Health Network, visit its Facebook page or the websites <http://www.chenangohealth.org/financial-assistance-program/> or <http://www.chenangohealth.org/every-woman-counts/>. Questions should be directed to Teri Currie at curriet@seonline.org.

This is America

September 17 marked the federal observance of National Constitution Day! From the National Constitution Center . . . "On September 17, 1787, the Founding Fathers signed the most influential document in American history: the United States Constitution. This document established the framework of our government and the rights and freedoms that 'We the People' enjoy today." To celebrate, some of Mr. Sherry's Civics students captured their view of what being an American means to them in pictures. Check them out on our Facebook page at www.facebook.com/SherburneEarlvilleCSD/.

Notification of Rights under the Family Educational Rights and Privacy Act

This section is intended to advise you of your rights with respect to the school records relating to (your son) (your daughter) (you) pursuant to the Federal "Family Educational Rights and Privacy Act of 1974."

Parents of a student under 18, or a student 18 or older, have a right to inspect and review any and all official records, files, and data directly related to their children or themselves, including all material that is incorporated into each student's cumulative record folder, and intended for school use or to be available to parties outside the school or school system, and specifically including, but not necessarily limited to, identifying data, academic work completed, level of achievement (grades, standardized achievement test scores), attendance data, scores on standardized intelligence, aptitude, and psychological tests, interest inventory results, health data, family

background information, teacher or counselor ratings and observations, and verified reports of serious or recurrent behavior patterns.

A parent of a student under 18 years of age or a student 18 years of age or older shall make a request for access to that student's school records, in writing, to the Superintendent of Schools, Guidance Counselor or Principal. Upon receipt of such request, arrangements shall be made to provide access to such records within a reasonable period of time, but in any case, not more than forty-five (45) days after the request has been received.

Parents and students are also entitled to an opportunity for a hearing to challenge the content of such records, to insure that they are not inaccurate, misleading, or otherwise in violation of the privacy or other rights of students, and to provide an opportunity for the correction or deletion of any

such inaccurate misleading, or inappropriate data contained therein. Any questions concerning the procedure to be followed in requesting such a hearing should be directed to the Superintendent.

Student records and any material contained therein which is personally identifiable, are confidential and may not be released or made available to persons other than parents or students without the written consent of such parents or student. There are a number of exceptions to this rule, such as other school employees and officials, and certain state and federal officials, who have a legitimate educational need for access to such records in the course of their employment.

Students with disabilities shall have the option of deciding whether to disclose the existence of their disability on their high school transcripts.

Annual AHERA Notification

In 1986, Congress passed the Asbestos Hazard Emergency Response Act (AHERA). This required schools to be inspected to identify any asbestos containing building materials. All Sherburne-Earlville School buildings were inspected and suspected materials were sampled to be tested and rated according to condition and potential hazard. Every three years, Hillcrest is required to be re-inspected to determine if any known or suspected asbestos containing building materials (ACBM) has changed and to make recommendations on managing or removing the ACBM.

The law further requires an asbestos management plan be developed to monitor any known or suspected ACBM. The plan has several ongoing requirements: This notification letter announcing the availability of the management plans for anyone to review upon request, training of the support staff about asbestos and how to deal with it, notifying short term workers such as sub-contractors of the locations of any known or suspected ACBM and posting of warning signs adjacent to locations of known or suspected ACBM. The designated asbestos coordinator conducts a six-month inspection of

areas of the buildings where known or suspected ACBM are located to assure they remain in good condition.

It is the intention of Sherburne-Earlville Schools to comply with all federal and state regulations controlling asbestos and to take whatever steps are necessary to ensure students and employees a healthy and safe environment in which to learn and work.

You are welcome to review a copy of the asbestos management plan upon request.

Please Contact

Jeff Genter, Head Custodian
Phone: (607) 674-7329

Sherburne-Earlville Central School
15 School Street
Sherburne, New York 13460

Non-Profit
Organization
U.S. POSTAGE
PAID
Norwich
New York
13815
Permit #18

DCWO BOCES Printing Service

Sherburne-Earlville is committed to students. By providing an environment of educational excellence which emphasizes the learning of academics and life skills, nurtures self-respect, and fosters life-long learning, we enable our students to pursue challenging individual goals and to become positive, contributing members of society.



VISIT OUR WEBSITE

<http://www.secsd.org>



LIKE US ON FACEBOOK

www.facebook.com/SherburneEarlvilleCSD
(@SherburneEarlvilleCSD)



FOLLOW US ON TWITTER

twitter.com/SECSDTweets (@SECSDTweets)

Current Resident or

**ECRWSS
Postal Customer**

Congratulations!



BARBARA COLF

1988-2018

Kindergarten Teacher



DARRELL COLLINS

1984-2018

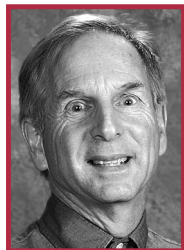
HS Math Teacher



PATTI GRAHAM

2007-2018

Elementary Teacher Aide



HARMON HOFF

1999-2018

HS Science Teacher



JEFF MANWARING

2000-2018

HS Band Teacher



DONALD PARKS

1987-2018

HS School Psychologist

**EDWARD
KOVACK, JR.**

1995-2018

Custodial Worker

ANNE NEWMAN

1993-2017

Elementary Teacher Aide

NANCY ROTH

1994-2017

Kindergarten Teacher

**ELIZABETH
SWISTAK**

2000-2017, Elementary
School Special Education/
Reading Teacher